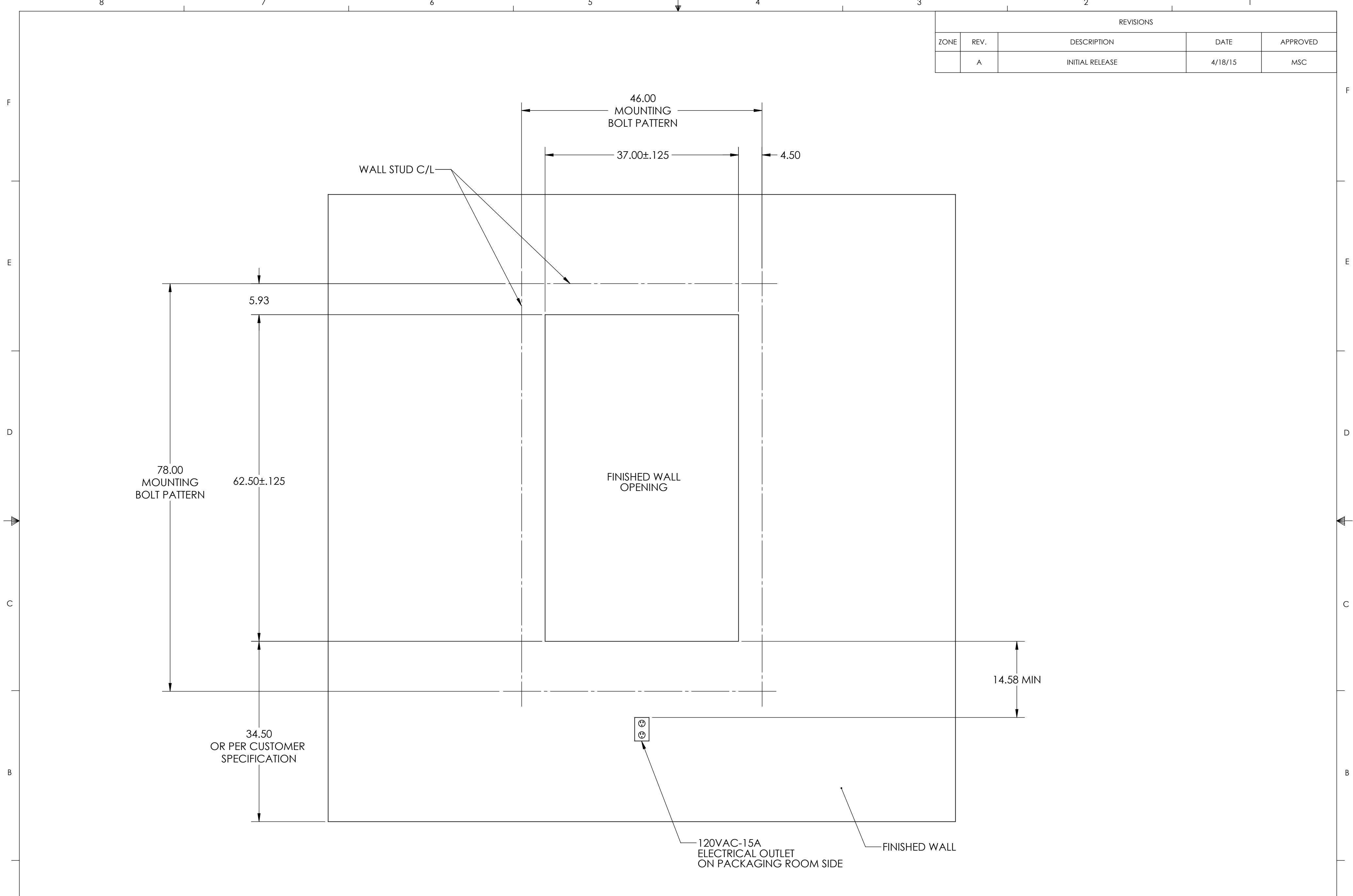


REVISIONS				
ZONE	REV.	DESCRIPTION	DATE	APPROVED
	A	INITIAL RELEASE	4/18/15	MSC



- NOTES:
1. WALL STUDS SHOULD BE CENTERED ON THE BOLT PATTERN CENTERLINES TO SUPPORT THE PASS-THRU WINDOW
 2. 120VAC-15A ELECTRICAL OUTLET IS REQUIRED TO POWER THE UNIT
 3. 6-FOOT POWER CORD IS SUPPLIED WITH THE WINDOW

PROPRIETARY AND CONFIDENTIAL
 THE INFORMATION CONTAINED IN THIS DRAWING IS THE SOLE PROPERTY OF CLEAN ROOM DEVICES, LLC. ANY REPRODUCTION IN PART OR AS A WHOLE WITHOUT THE WRITTEN PERMISSION OF CLEAN ROOM DEVICES, LLC IS PROHIBITED.

UNLESS OTHERWISE SPECIFIED:		NAME	DATE	CLEAN ROOM DEVICES, LLC	
DIMENSIONS ARE IN INCHES		DRAWN	MSC		4/18/15
TOLERANCES:		CHECKED			
FRACTIONAL ±1/16		ENG APPR.			
ANGULAR: MACHINED ±0.5° BEND ±2°		MFG APPR.			
TWO PLACE DECIMAL ±.01		Q.A.			
THREE PLACE DECIMAL ±.005		COMMENTS:			
INTERPRET GEOMETRIC TOLERANCING PER: ANSI Y14.5					
MATERIAL					
SEE NOTES					
NEXT ASSY	USED ON				
APPLICATION					
DO NOT SCALE DRAWING					

TITLE:	FINISHED WALL OPENING, CRD316	
SIZE	DWG. NO.	REV
C	316-002	A
SCALE: 1:12	WEIGHT:	SHEET 1 OF 1