

CRD105 TUBING CUTTER EXTENSION

ASSEMBLY PROCEDURE



VERSION 2.0
LAST EDITED 3.27.07
DOCUMENT NUMBER 001
cleanroomdevices.com

Table of Contents

Title Page.....1

Table of Contents.....2

1.0 General Product & Safety Information.....3

2.0 Installation.....4

3.0 Product Specifications.....7

8.0 Parts List.....8

9.0 Warranty.....9

 9.1 Warranty

 9.2 Warranty period

1.0 General Product & Safety Information

1.1 Product Information

- The CRD105 Tubing Cutter Extension gives the CRD100 Tubing Cutter the ability to cut an additional 24-48'' quickly and accurately. The system is designed to cut flexible tubing (including heatshrink) up to a Shore A 85 durometer, including any non-metallic braided materials. Easily interchangeable bushing sets have been provided allowing the user to cut five (5) standard industry sizes (1/8'', 3/16'', 1/4'', 5/16'', 3/8'') of tubing.
- The minimum/maximum cut lengths range from 7/8'' to 48'' long. All lengths within that range can be achieved within plus/minus .030'' tolerance utilizing the slide block and certified scale. Minimum cuts lengths of 7/8'' can be achieved by visually locating the tube at the end of the bushing and depressing the activation button on the slide block with your free hand.
- The unit is designed for both left-hand and right-hand operation.

2.0 Installation

Ensure all four (4) rubber feet are completely stabilized on your work surface prior to installing the extension.

- Begin by removing the 4 M5 screws and detaching the stainless steel link plate from the bottom of the extension.

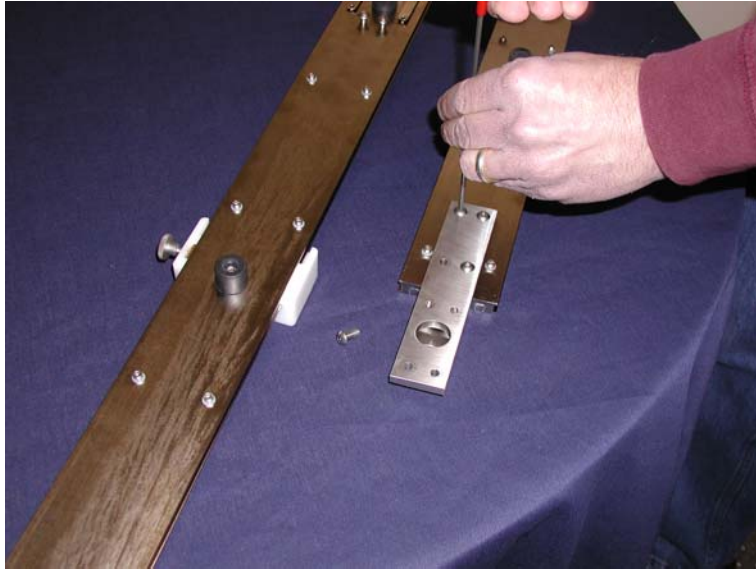


Figure 1: Removing the link plate

- Attach the link plate to the CRD100 base using the provided M5 screws, allowing the rubber foot to pass through the clearance hole on the link plate.

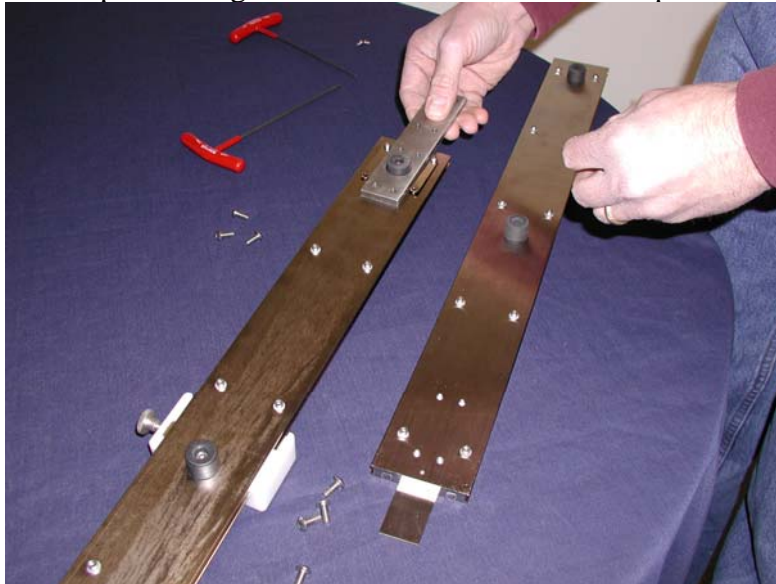


Figure 2: Attaching the link plate to the CRD100 base

- Remove the 2 M3 stop screws from either side of the CRD100 base. These are located in the cutting block grooves at the end of the base.

- Stand the CRD100 unit vertically on its side, and slide the extension onto the base, ensuring the extension scale lines up with the mating notch in the base.



Figure 3: Placing the extension on the base

- Loosen the slide block and slide it up to the joint between the mated parts. Tighten the brass break directly over the joint and verify that the two rulers are precisely aligned.

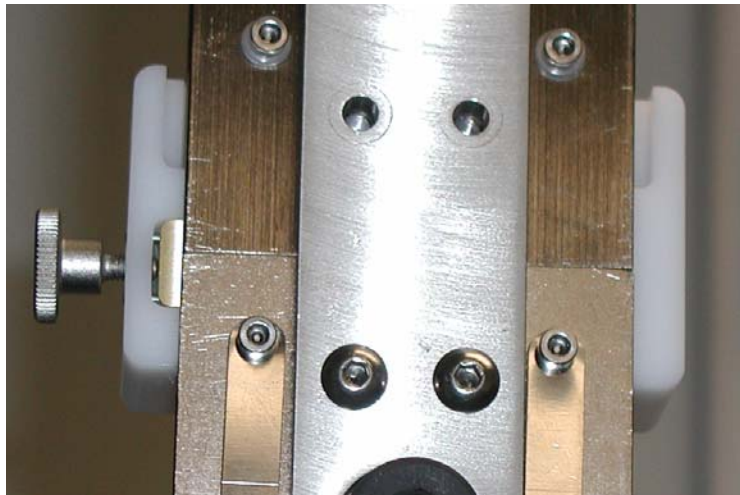


Figure 4: Tightening the break on the mating joint

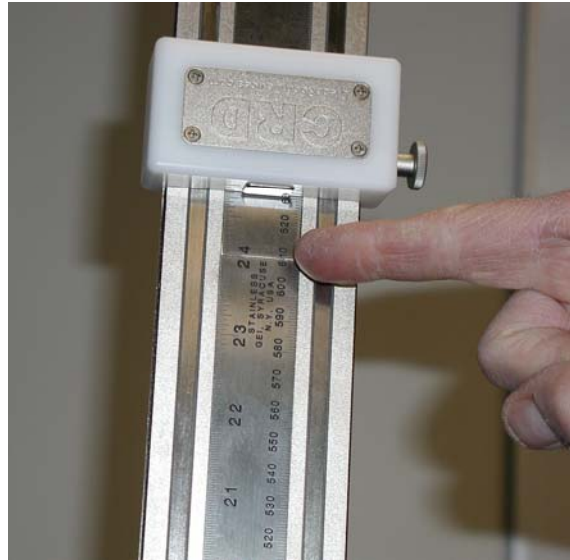


Figure 5: Alignment of the scales and slide block

- Reattach the link plate to the extension using the 4 M5 screws provided, and ensuring all holes are precisely lined up.
- Establish electrical connectivity with the extension by attaching the contact straps on either side of the link plate, using the 4 M3 screws already present. Verify the nylon washers are placed between the contact straps and the base. **Failure to do so will result in a short circuit, and the unit will not operate.**



Figure 6: Attaching the contact straps

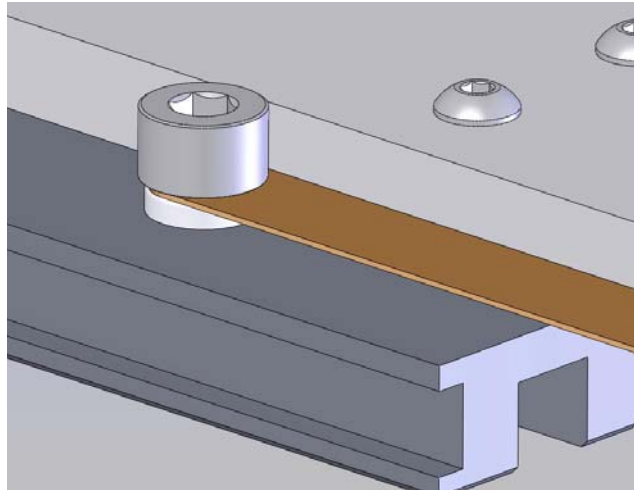


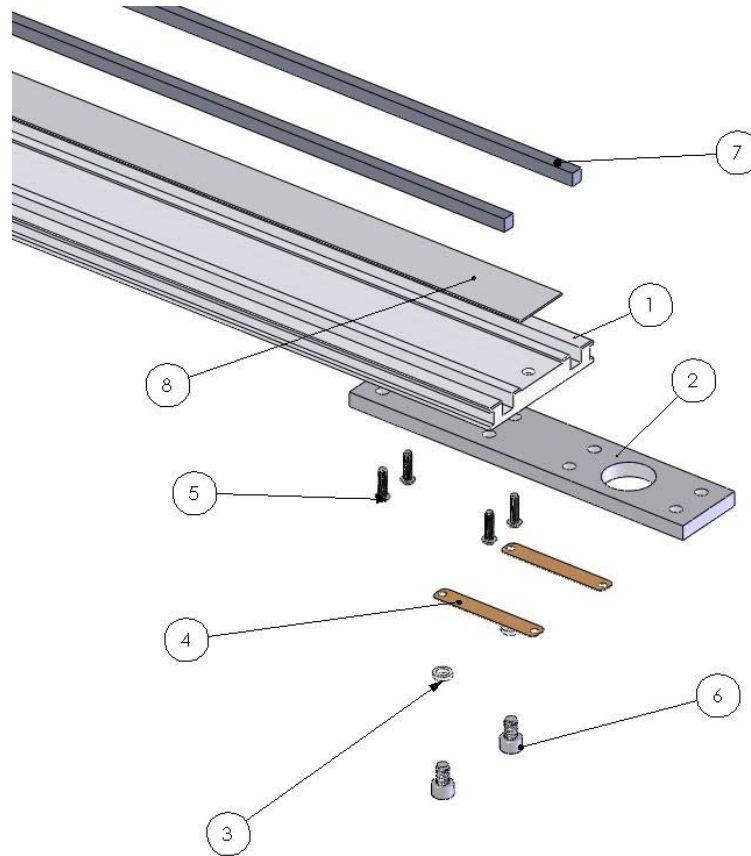
Figure 7: Proper contact strap placement

After completing these steps, the extension will be fully functional. For any additional operational questions, please consult the CRD100 Tubing Cutter Operations Manual.

3.0 Product Specifications

Unit Weight	5LBS / 3.724 KG
Overall Dimensions	31" lg. x 2.5"w x 1" ht.

4.0 Parts List



Item no.	Part no.	Description	Qty.
1	CD001-030	Extension, Base Plate	1
2	CD001-033	Link Plate	1
3	P00043	Washer, Nylon	12
4	CD001-034	Contact Strap	2
5	P00014	M5x10mm	8
6	P00041	M3x8mm	2
7	CD001-031	Contact Bar, Extension	2
8	P00096	Ruler, Stainless Steel (24-48")	1

5.0 Warranty

5.1 Warranty

The manufacturer warrants the product manufactured by it, when properly installed, operated, applied and maintained in accordance with the procedures and recommendations outlined in the manufacturer's operation manual, to be free from defects in material or workmanship for a period as specified below, provided such defect is discovered and brought to the manufacturer's attention within the aforesaid warranty period.

The manufacturer will repair or replace any product or part determined to be defective by the manufacturer within the warranty period, provided such defect occurred in the normal service and not as a result of misuse, abuse, neglect or accident. Normal maintenance items requiring routine replacement are not warranted. The warranty covers parts and labor for the warranty period unless otherwise specified. Repair or replacement shall be made at the factory or the installation site, at the sole discretion of the manufacturer. Any service performed on the product by anyone other than the manufacturer must first be authorized by the manufacturer.

Unauthorized service voids the warranty and any resulting charge or subsequent claim will not be paid. Products repaired or replaced under warranty shall be warranted for the unexpired portion of the warranty applying to the original product.

The foregoing is the exclusive remedy of any buyer of the manufacturer's product. The maximum damages liability of the manufacturer is the original purchase price of the product or part.

THE FORGOING WARRANTY IS EXCLUSIVE AND IN LIEU OF ALL OTHER WARRANTIES, WHETHER WRITTEN, ORAL, OR STATUTORY, AND IS EXPRESSLY IN LIEU OF THE IMPLIED WARRANTY OF MERCHANTABILITY AND THE IMPLIED WARRANTY OF FITNESS FOR A PARTICULAR PURPOSE. THE MANUFACTURER SHALL NOT BE LIABLE FOR LOSS OR DAMAGE BY REASON OF STRICT LIABILITY IN TORT OR ITS NEGLIGENCE IN WHATEVER MANNER INCLUDING DESIGN, MANUFACTURE OR INSPECTION OR THE EQUIPMENT OR ITS FAILURE TO DISCOVER, REPORT, REPAIR, OR MODIFY LATENT DEFECTS INHERENT THEREIN.

THE MANUFACTURER, HIS REPRESENTATIVE OR DISTRIBUTOR SHALL NOT BE LIABLE FOR LOSS OF USE OF THE PRODUCT OR OTHER INCIDENTAL OR CONSEQUENTIAL COSTS, EXPENSES, OR DAMAGES INCURRED BY THE BUYER, WHETHER ARISING FROM BREACH OF WARRANTY, NEGLIGENCE OR STRICT LIABILITY IN TORT.

The manufacturer does not warrant any product, part, material, component, or accessory manufactured by others and sold or supplied in connection with the sale or manufacturer's products.

5.2 Warranty Period

Parts and labor for one (1) year from the date of shipment from the factory. Freight to the factory on units that the manufacturer requests to be returned shall be paid by the purchaser, all return freight to be paid by the manufacturer; means of transportation to be specified by the manufacturer.

*For additional information contact your local representative or;
visit www.cleanroomdevices.com*