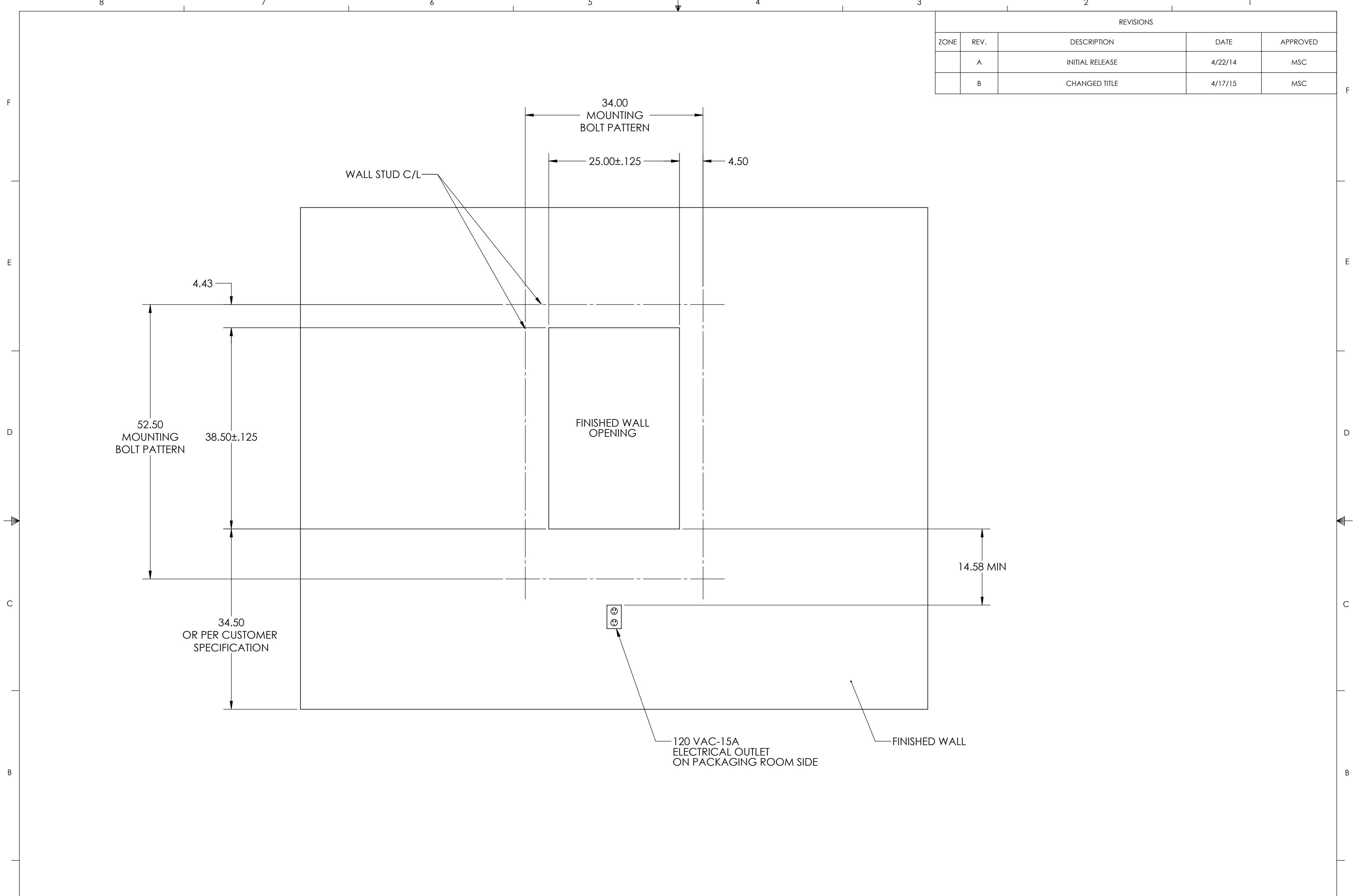


REVISIONS				
ZONE	REV.	DESCRIPTION	DATE	APPROVED
	A	INITIAL RELEASE	4/22/14	MSC
	B	CHANGED TITLE	4/17/15	MSC



- NOTES:
1. WALL STUDS SHOULD BE CENTERED ON THE BOLT PATTERN CENTERLINES TO SUPPORT THE PASS-THRU WINDOW
 2. 120VAC-15A ELECTRICAL OUTLET IS REQUIRED TO POWER THE UNIT
 3. 6-FOOT POWER CORD IS SUPPLIED WITH THE WINDOW

PROPRIETARY AND CONFIDENTIAL
 THE INFORMATION CONTAINED IN THIS DRAWING IS THE SOLE PROPERTY OF CLEAN ROOM DEVICES, LLC. ANY REPRODUCTION IN PART OR AS A WHOLE WITHOUT THE WRITTEN PERMISSION OF CLEAN ROOM DEVICES, LLC IS PROHIBITED.

		UNLESS OTHERWISE SPECIFIED:		NAME	DATE	CLEAN ROOM DEVICES, LLC
		DIMENSIONS ARE IN INCHES	DRAWN	MSC	4/22/14	
		TOLERANCES:	CHECKED			
		FRACTIONAL ±1/16	ENG APPR.			
		ANGULAR: MACHINED ±0.5° BEND ±2°	MFG APPR.			
		TWO PLACE DECIMAL ±.01	Q.A.			
		THREE PLACE DECIMAL ±.005	COMMENTS:			
		INTERPRET GEOMETRIC TOLERANCING PER: ANSI Y14.5				
		MATERIAL	SEE NOTES			
NEXT ASSY	USED ON	FINISH	SEE NOTES			
APPLICATION		DO NOT SCALE DRAWING				
SIZE	DWG. NO.	REV				
C	321-004	B				
SCALE: 1:12		WEIGHT:	SHEET 1 OF 1			