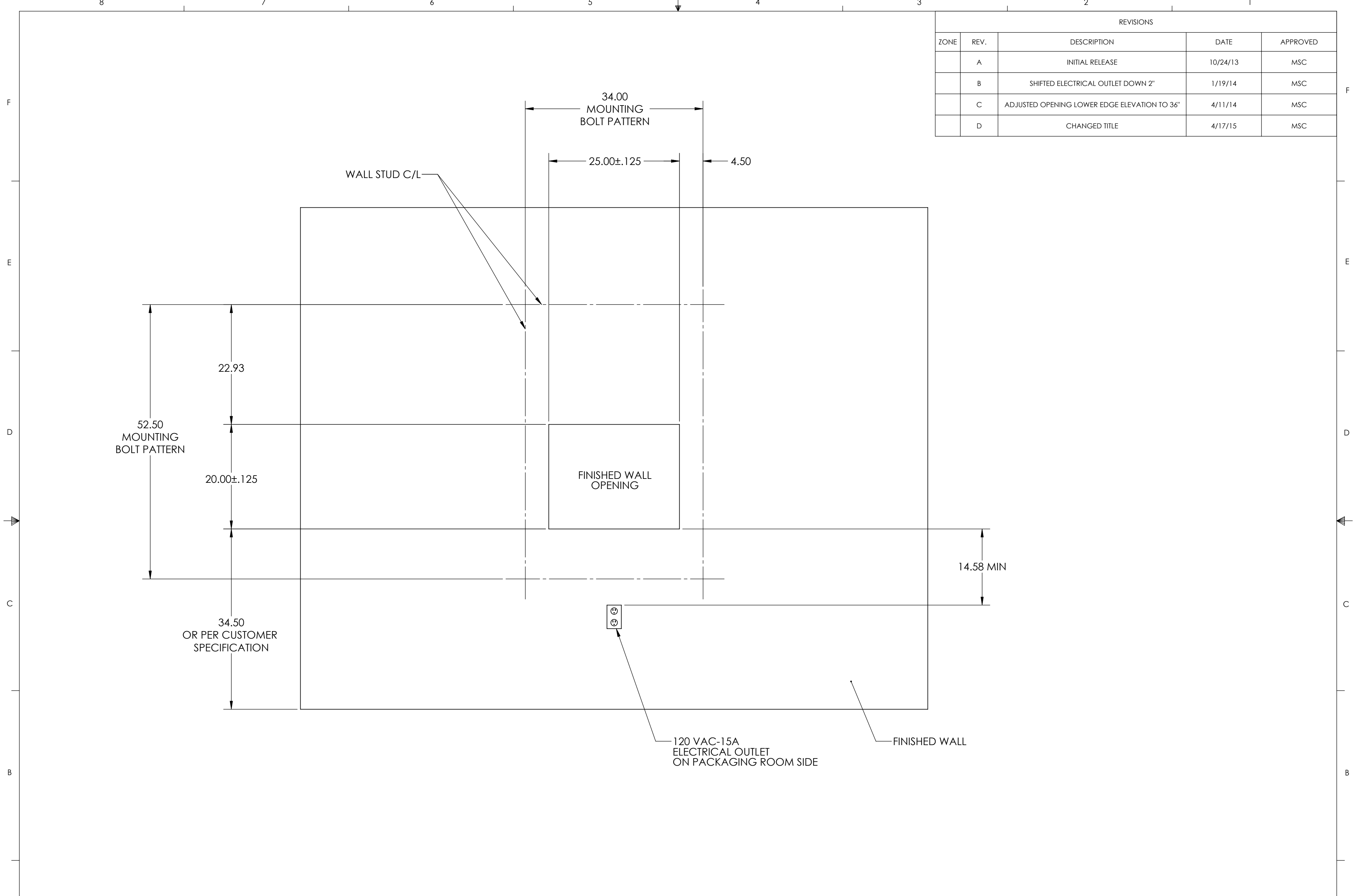


REVISIONS				
ZONE	REV.	DESCRIPTION	DATE	APPROVED
	A	INITIAL RELEASE	10/24/13	MSC
	B	SHIFTED ELECTRICAL OUTLET DOWN 2"	1/19/14	MSC
	C	ADJUSTED OPENING LOWER EDGE ELEVATION TO 36"	4/11/14	MSC
	D	CHANGED TITLE	4/17/15	MSC



- NOTES:
1. WALL STUDS SHOULD BE CENTERED ON THE BOLT PATTERN CENTERLINES TO SUPPORT THE PASS-THRU WINDOW
 2. 120VAC-15A ELECTRICAL OUTLET IS REQUIRED TO POWER THE UNIT
 3. 6-FOOT POWER CORD IS SUPPLIED WITH THE WINDOW

PROPRIETARY AND CONFIDENTIAL
 THE INFORMATION CONTAINED IN THIS DRAWING IS THE SOLE PROPERTY OF CLEAN ROOM DEVICES, LLC. ANY REPRODUCTION IN PART OR AS A WHOLE WITHOUT THE WRITTEN PERMISSION OF CLEAN ROOM DEVICES, LLC IS PROHIBITED.

		UNLESS OTHERWISE SPECIFIED:		NAME	DATE
		DIMENSIONS ARE IN INCHES	DRAWN	MSC	10/24/13
		TOLERANCES:	CHECKED		
		FRACTIONAL ±1/16	ENG APPR.		
		ANGULAR: MACHINED ±0.5°	MFG APPR.		
		BEND ±2°	Q.A.		
		TWO PLACE DECIMAL ±.01	COMMENTS:		
		THREE PLACE DECIMAL ±.005			
		INTERPRET GEOMETRIC TOLERANCING PER: ANSI Y14.5			
		MATERIAL			
		SEE NOTES			
NEXT ASSY	USED ON	FINISH			
		SEE NOTES			
APPLICATION		DO NOT SCALE DRAWING			

CLEAN ROOM DEVICES, LLC		
TITLE: FINISHED WALL OPENING, CRD320		
SIZE C	DWG. NO. 320-017	REV D
SCALE: 1:12 WEIGHT:		SHEET 1 OF 1