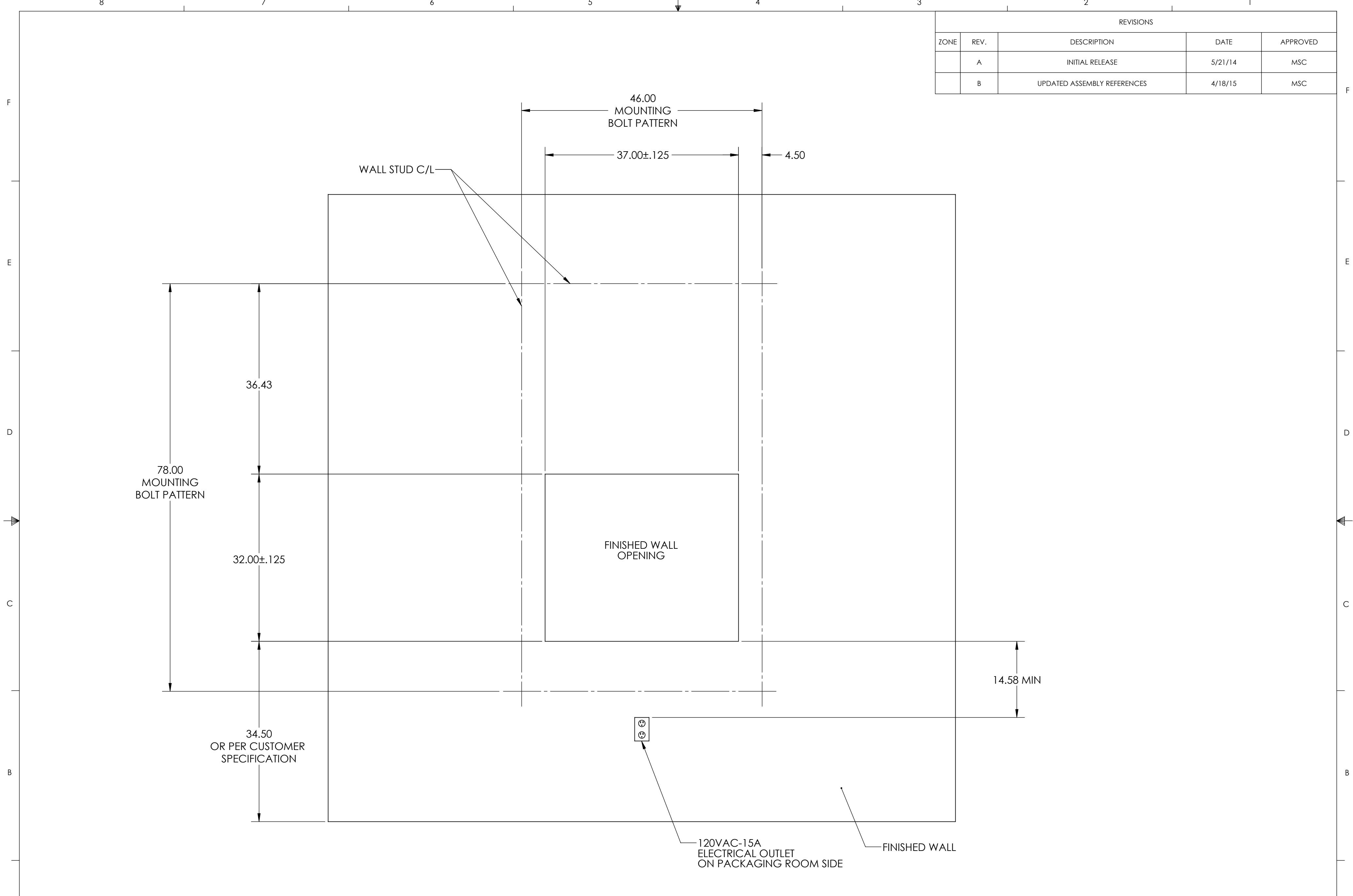


REVISIONS				
ZONE	REV.	DESCRIPTION	DATE	APPROVED
	A	INITIAL RELEASE	5/21/14	MSC
	B	UPDATED ASSEMBLY REFERENCES	4/18/15	MSC



- NOTES:
1. WALL STUDS SHOULD BE CENTERED ON THE BOLT PATTERN CENTERLINES TO SUPPORT THE PASS-THRU WINDOW
 2. 120VAC-15A ELECTRICAL OUTLET IS REQUIRED TO POWER THE UNIT
 3. 6-FOOT POWER CORD IS SUPPLIED WITH THE WINDOW

PROPRIETARY AND CONFIDENTIAL
 THE INFORMATION CONTAINED IN THIS DRAWING IS THE SOLE PROPERTY OF CLEAN ROOM DEVICES, LLC. ANY REPRODUCTION IN PART OR AS A WHOLE WITHOUT THE WRITTEN PERMISSION OF CLEAN ROOM DEVICES, LLC IS PROHIBITED.

UNLESS OTHERWISE SPECIFIED:		NAME		DATE		CLEAN ROOM DEVICES, LLC	
DIMENSIONS ARE IN INCHES		DRAWN	MSC	5/21/14	TITLE:		
TOLERANCES:		CHECKED			FINISHED WALL		
FRACTIONAL ±1/16		ENG APPR.			OPENING, CRD315		
ANGULAR: MACHINED ±0.5°		MFG APPR.			SIZE	DWG. NO.	REV
BEND ±2°		Q.A.			C	315-004	B
TWO PLACE DECIMAL ±.01		COMMENTS:					
THREE PLACE DECIMAL ±.005							
INTERPRET GEOMETRIC TOLERANCING PER: ANSI Y14.5							
MATERIAL							
SEE NOTES							
NEXT ASSY	USED ON						
APPLICATION							
DO NOT SCALE DRAWING							
			SCALE: 1:12		WEIGHT:		SHEET 1 OF 1